

TP-I-03F

INTEGRAL DRIVER CROSS ARM SYSTEM



PROJECT INFORMATION

PROJECT NAME	
CHM JOB #	
LOCATION	

STRUCTURAL INFORMATION

FIXTURE COUNT	
MOUNTING HEIGHT	
BASE TYPE	
DESIGN CRITERIA	
WIND SPEED	

ELECTRICAL INFORMATION

SOURCE VOLTAGE	
SOURCE PHASING	
FIXTURE VOLTAGE	

LUMINAIRE INFORMATION

FIXTURE TYPE	
DRIVER TYPE	
FIXTURE WATTAGE	
CCT	
CRI	
LIGHTING DESIGN #	

WARRANTY

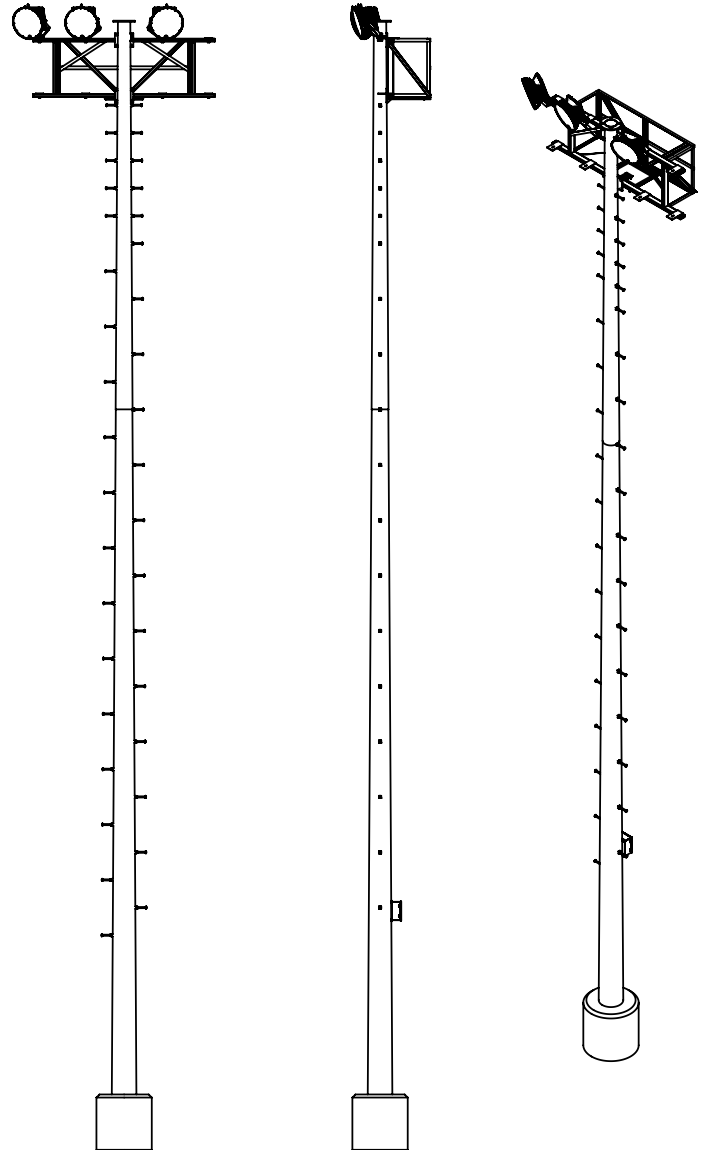
PARTS WARRANTY	
LABOR WARRANTY	

AGENCY INFORMATION

AGENCY	
AGENT	

NOTES

FOR TOWER NUMBERS	



DO NOT SCALE DRAWING. REFERENCE TOWER AND FOUNDATION DRAWING FOR STRUCTURAL SPECIFICATIONS.

SYSTEM IS MANUFACTURED IN FORT WORTH, TEXAS BY CHM SPORTS LIGHTING, A DIVISION OF CHM INDUSTRIES, INC. COMPLETE SYSTEM IS ETL LISTED (TO STANDARD UL1598) INCLUDING REMOTE DRIVER ENCLOSURES, DROP CABLES, PRE-WIRED CROSS ARMS AND LUMINAIRES. SEE TOWER DRAWING FOR STRUCTURAL DETAILS. IF CUSTOMIZATION OF TOWER IS REQUIRED, PLEASE SEE TOWER CUSTOMIZATION WORK SHEET FOR PROVISIONS.