

GENERAL

- TOP LATCH
- BOTTOM LATCH
- EXTERNAL DRIVE
- INTERNAL DRIVE
- LIGHTNING ARRESTOR
- AIR TERMINAL
- FAA OBSTRUCTION LIGHT
- ONE CIRCUIT
- TWO CIRCUIT
- THREE CIRCUIT

04 HEAD FRAME

- 37"
- 44"
- 57"
- WELDMENT:  GALVANIZED (STD)
- MOUNT:  TOP PLATE
- HOIST SHEAVES:  ALUMINUM (STD)
- CORD SHEAVE:  PLASTIC (STD.)
- FASTENERS:  STAINLESS STEEL
- S.S. CABLE:  3/16"
- TOP LATCH
- LATCH CAM:  STAINLESS STEEL
- BOTTOM LATCH
- GUIDE BLOCK:  STAINLESS STEEL

ISSUED FOR APPROVAL

APPROVED: \_\_\_\_\_

REVISE: \_\_\_\_\_

SIGNED COPY REQUIRED PRIOR TO MANUFACTURE

05 LUMINAIRE RING

- 29.5"
- 36"
- 44"
- WELDMENT:  GALVANIZED (STD)
- ROLLERS:  SPRING ARM
- TOP LATCH
- LATCH SHAFT:  STAINLESS STEEL
- JUNCTION BOX:  STD. (NEMA 3R ALUMINUM)
- SUSPENSION SPRING:  STD.
- PLUNGER:  STD.
- THRUST WASHER:  STD.
- STRAND VICE:  STD.

COMMENTS: \_\_\_\_\_

08 ELECTRICAL

- 120V 1 PHASE-3 WIRE 60Hz
- 120/240 3 PHASE-5 WIRE 60Hz
- 208 1 PHASE-3 WIRE 60Hz
- 208 3 PHASE-4 WIRE 60Hz
- 240 1 PHASE-3 WIRE 60Hz
- 120/240 1 PHASE-4 WIRE 60Hz
- 240/480 1 PHASE-4 WIRE 60Hz
- 277 1 PHASE-3 WIRE 60Hz
- 277/480 3 PHASE-5 WIRE 60Hz
- 480 1 PHASE-3 WIRE 60Hz
- 480 3 PHASE-4 WIRE 60Hz
- 220 1 PHASE-3 WIRE 60Hz
- 347 1 PHASE-3 WIRE 60Hz
- 347/600 3 PHASE-5 WIRE 60Hz
- 220 1 PHASE-3 WIRE 50Hz
- 240 1 PHASE-3 WIRE 50Hz
- 240/415 3 PHASE-5 WIRE 50Hz
- 220/380 3 PHASE-5 WIRE 50Hz
- OTHER

06 TRANSITION ASSEMBLY

- STANDARD
- OTHER

COMMENTS: \_\_\_\_\_

07 WINCH PLATE

- DRIVE:  INTERNAL
- EXTERNAL
- 1.5 HP
- 2.0 HP
- TORQUE TENDER:  TT3 (STD)
- WINCH:  PG-3
- S.S. CABLE:  1/4"
- PORTABLE DRIVE UNIT
- TRANSFORMER
- MOBILE DRIVE CART
- TT3X
- TT4
- OTHER
- PG-7
- 5/16"
- 3/8"
- OTHER

COMMENTS: \_\_\_\_\_

SHEET

01

PROVISIONS SHEET

DWG. NO.

426-2-01

DATE:

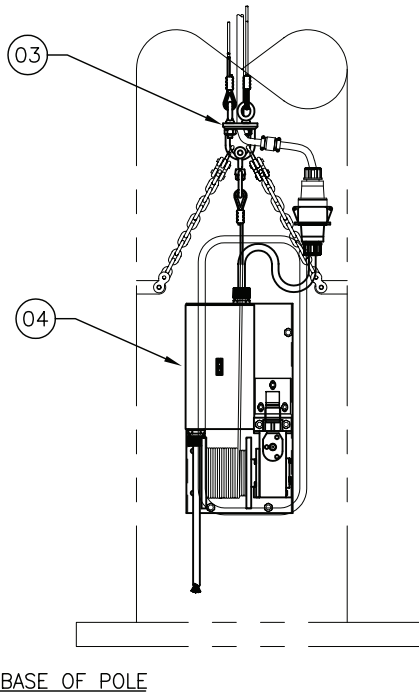
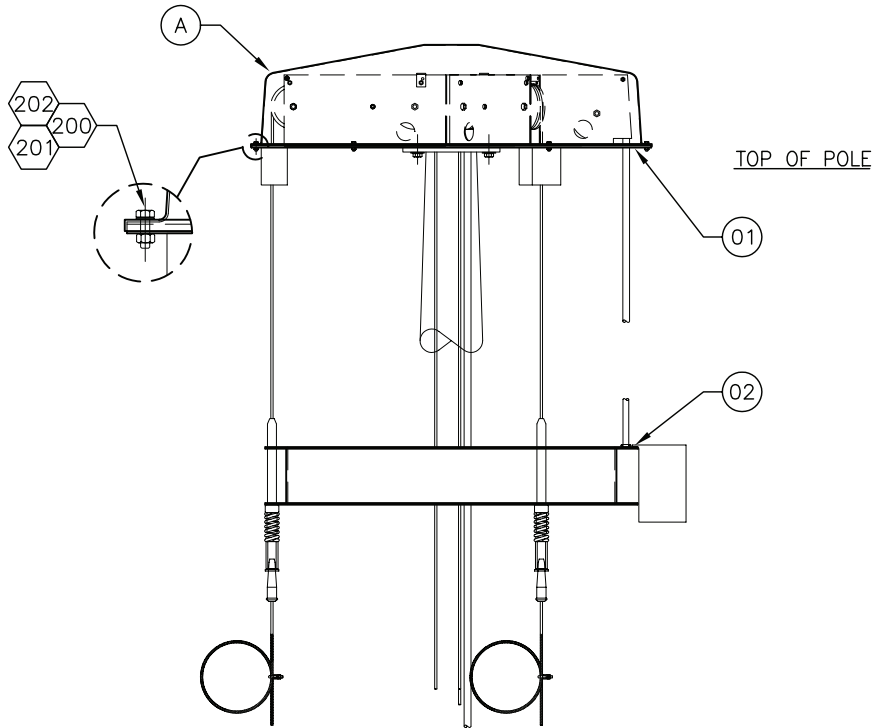
09/26/05

REV. DATE



A Division of CHM Industries

682-286-0046



**ISSUED FOR APPROVAL**

APPROVED: \_\_\_\_\_

REVISE: \_\_\_\_\_

SIGNED COPY REQUIRED PRIOR  
TO MANUFACTURE

202	6	S.S. FLAT WASHER
201	6	1/4-20 S.S. NYLOCK NUT
200	6	1/4-20 X 1" S.S. BOLT
05	1	ALUMINUM DOME
04	1	WINCH PLATE ASSEMBLY
03	1	TRANSITION ASSEMBLY
02	1	RING ASSEMBLY
01	1	HEAD FRAME ASSEMBLY
ITM	QTY	DESCRIPTION

SHEET  
**02**

GENERAL ASSEMBLY

DWG. NO. 426-2-02  
DATE: 09/26/05  
REV. DATE

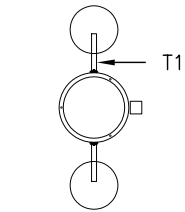
**CHM**  
LIGHTING  
A Division of CHM Industries  
682-286-0046

**ISSUED FOR APPROVAL**

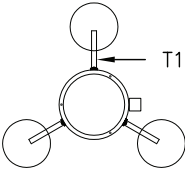
APPROVED: \_\_\_\_\_

REVISE: \_\_\_\_\_

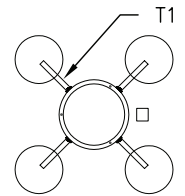
SIGNED COPY REQUIRED PRIOR TO MANUFACTURE



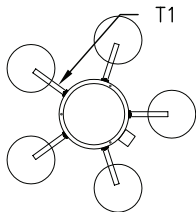
2-FIXTURE



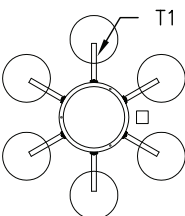
3-FIXTURE



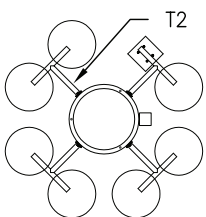
4-FIXTURE



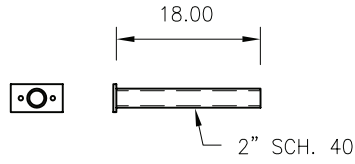
5-FIXTURE



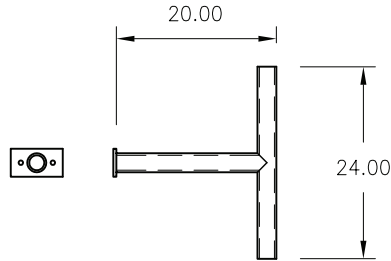
6-FIXTURE



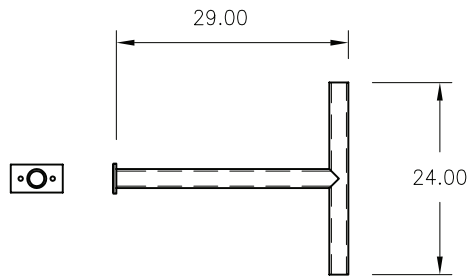
7-FIXTURE



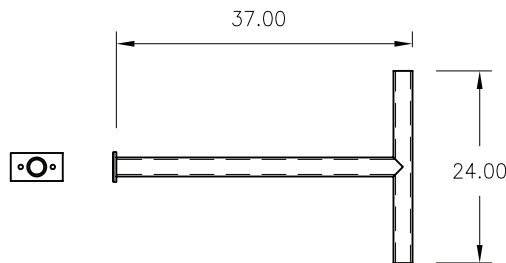
**TENON T-1**



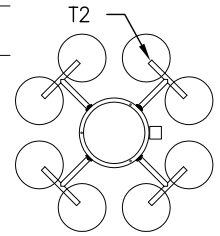
**TENON T-2**



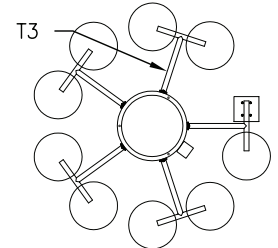
**TENON T-3**



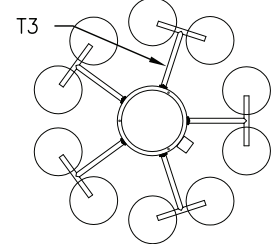
**TENON T-4**



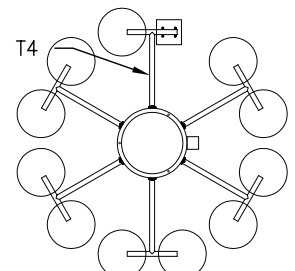
8-FIXTURE



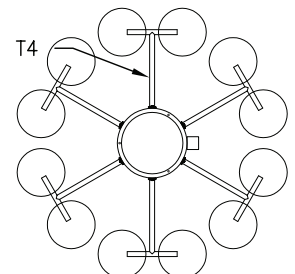
9-FIXTURE



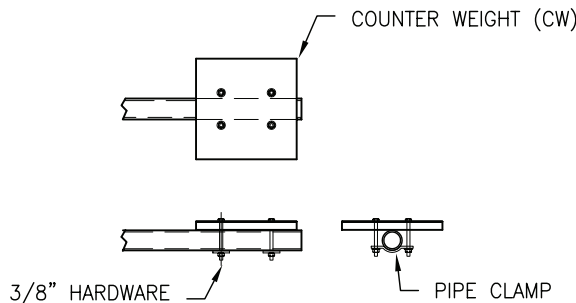
10-FIXTURE



11-FIXTURE



12-FIXTURE



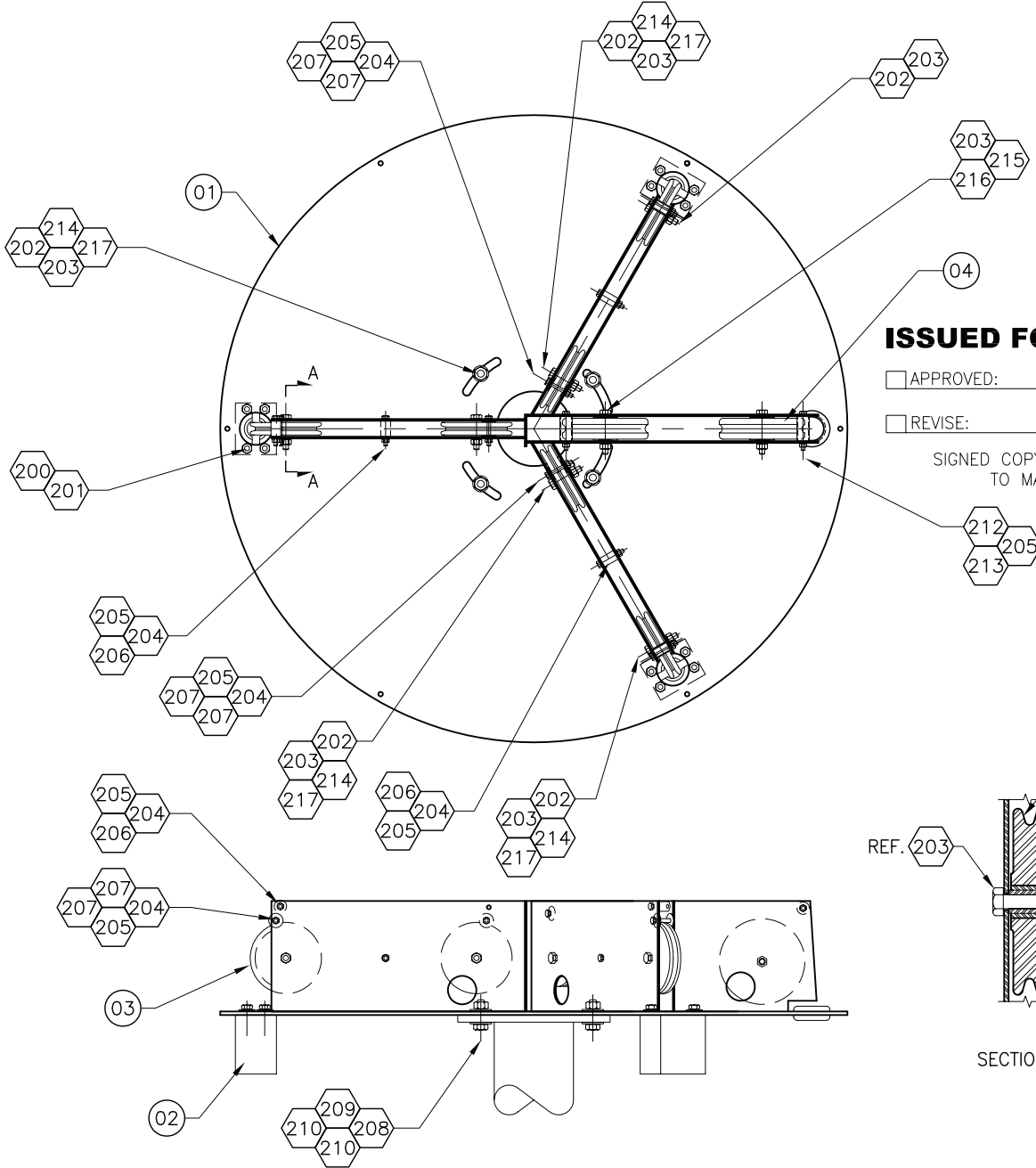
**COUNTER WEIGHT DETAIL**

SHEET  
**03**

FIXTURE ARRAY DRAWING

DWG. NO.	426-2-03
DATE:	09/26/05
REV.	

**CHM**  
LIGHTING  
A Division of CHM Industries  
682-286-0046

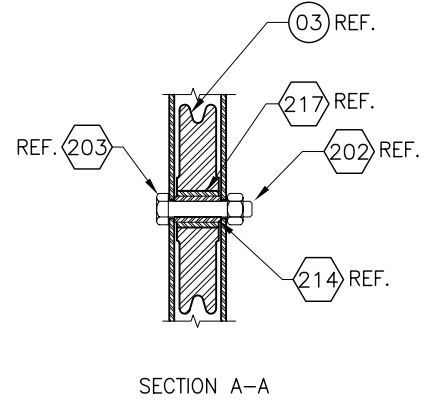


**ISSUED FOR APPROVAL**

APPROVED: \_\_\_\_\_

REVISE: \_\_\_\_\_

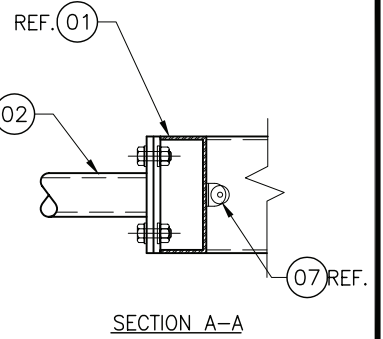
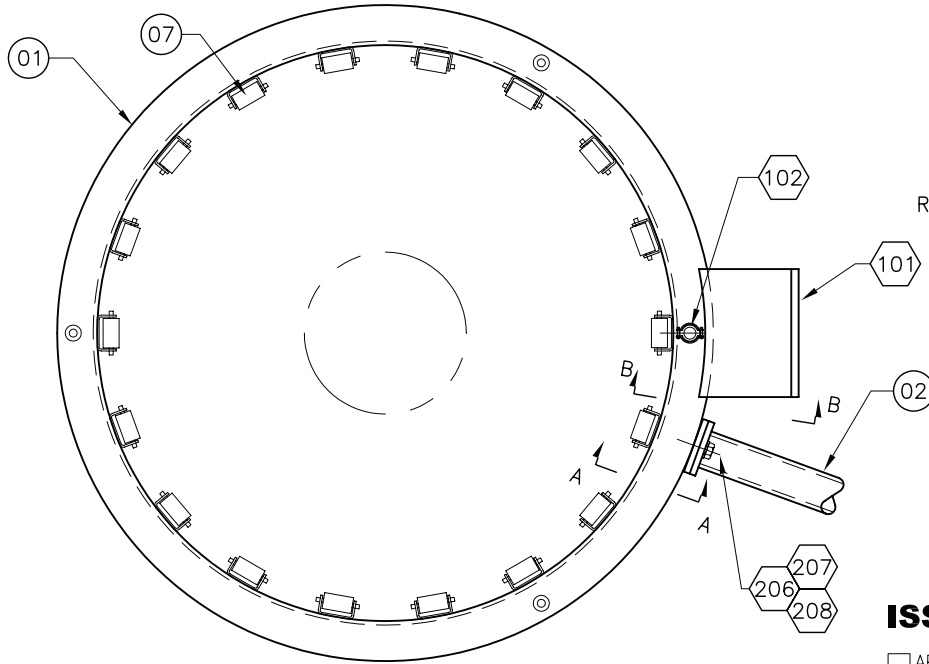
SIGNED COPY REQUIRED PRIOR TO MANUFACTURE



210	8	1/2" S.S. FLAT WASHER		
209	4	1/2-16 S.S. LOCK NUT		
208	10	1/2" S.S. FLAT WASHER		
207	12	1/4" X 1 1/4" FLAT FENDER WASHER		
206	6	1/2" SCH. 40 X 1 1/8" LONG TUBE SPACER		
205	13	1/4-20 S.S. LOCK NUT		
204	13	1/4-20 X 1 3/4 S.S. HH SHOULDER BOLT		
203	8	3/8-16 S.S. LOCK NUT		
202	8	3/8-16 X 2" S.S. HH SHOULDER BOLT		
201	12	3/8" S.S. LOCK NUT	217	6
200	12	3/8-16 X 1" S.S. HH BOLT	216	2
100	1	PLASTIC BUSHING	215	2
04	2	CORD SHEAVE	214	6
03	6	WIRE ROPE SHEAVE	213	2
02	3	ALUMINUM GUIDE BLOCK	212	2
01	1	HEADFRAME WELDMENT ASSEMBLY	211	
ITM	QTY	DISCRIPTION		

SHEET <b>04</b>	HEAD FRAME ASSEMBLY	DWG. NO.	426-2-04
		DATE:	09/26/05
		REV. DATE	



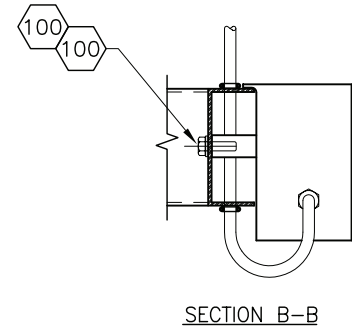
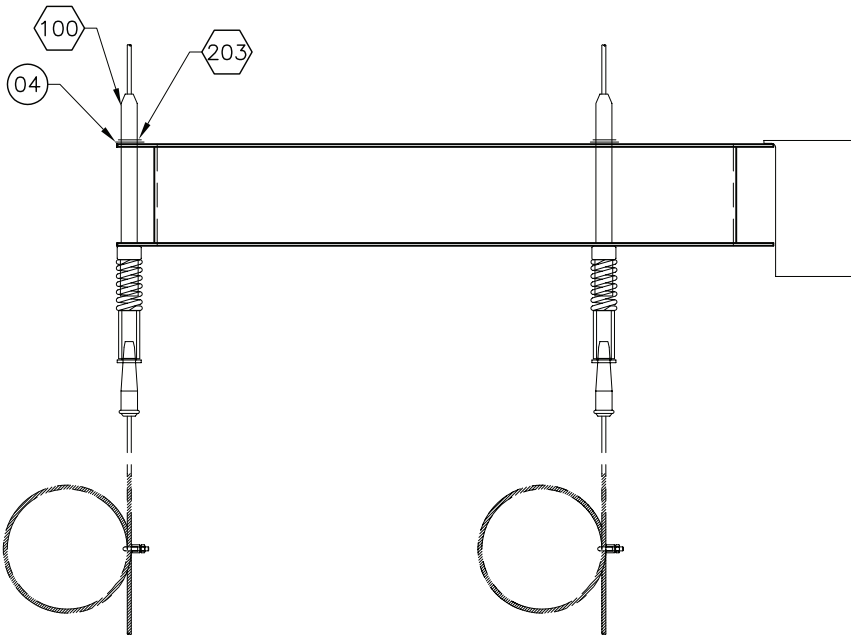


**ISSUED FOR APPROVAL**

APPROVED: \_\_\_\_\_

REVISE: \_\_\_\_\_

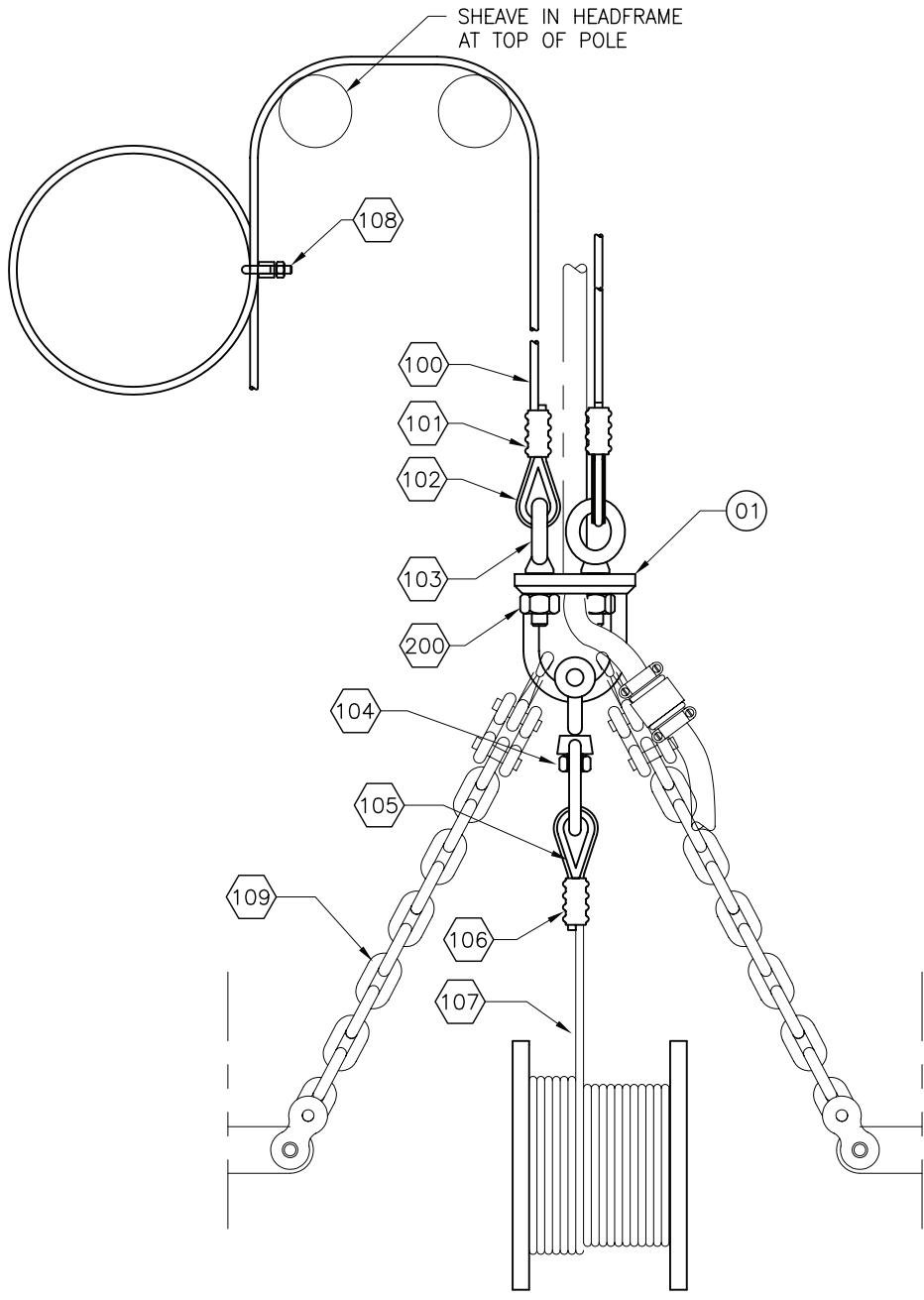
SIGNED COPY REQUIRED PRIOR TO MANUFACTURE



205	3	S.S. LOCK WASHER
204	2	3/8-16 X 1" S.S. HH BOLT
203	3	S.S. "E" RETAINING CLIP
202	VAR	1/2-13 S.S. FLAT WASHER
201	VAR	1/2-13 S.S. LOCK NUT
200	VAR	1/2-13 X 1 1/2 S.S. HH BOLT
101	1	CORD CLAMP
100	1	JUNCTION BOX
06	3	CUSTOM WASHER
05	3	S.S. GUIDE SHAFT
04	14	FIXED ROLLER ASSEMBLY
03	3	INDICATOR FLAG ASSEMBLY
02	VAR	TENON WELDMENT
01	1	RING WELDMENT
ITM	QTY	DESCRIPTION

SHEET <b>05</b>	RING ASSEMBLY	DWG. NO.	426-2-05
		DATE:	09/26/05
		REV. DATE	





200	3	1/2-13 S.S. LOCK NUT
109	2	CHAIN
108	3	CABLE CLAMP ASSEMBLY
107	1	7-19 302/304 WIRE ROPE
106	1	ZINC PLATED COPPER COMPRESSION SLEEVE
105	1	WIRE ROPE THIMBLE
104	1	1/2" JAW AND EYE ASSEMBLY
103	3	1/2" EYE BOLT, ZINC PLATED
102	3	WIRE ROPE THIMBLE
101	3	ZINC PLATED COPPER SLEEVE
100	3	7-19 302/304 S.S. WIRE ROPE
01	1	TRANSITION PLATE WELDMENT ASSEMBLY
ITM	QTY	DESCRIPTION

**ISSUED FOR APPROVAL**

APPROVED: \_\_\_\_\_

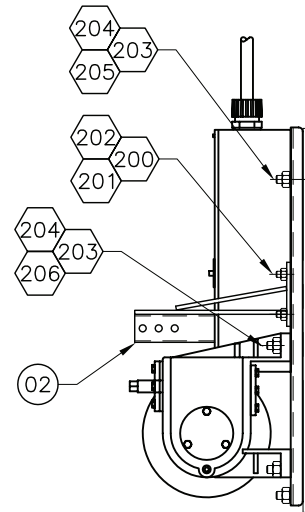
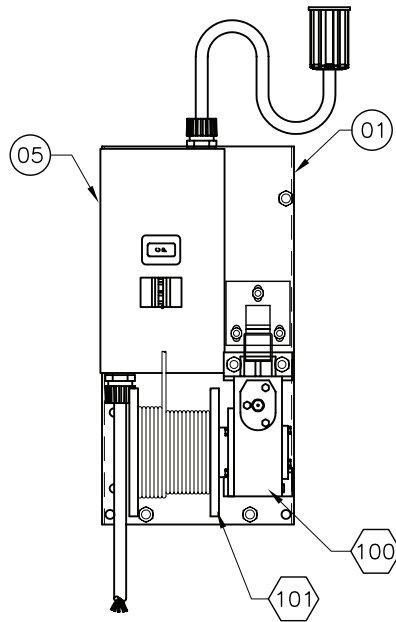
REVISE: \_\_\_\_\_

SIGNED COPY REQUIRED PRIOR TO MANUFACTURE

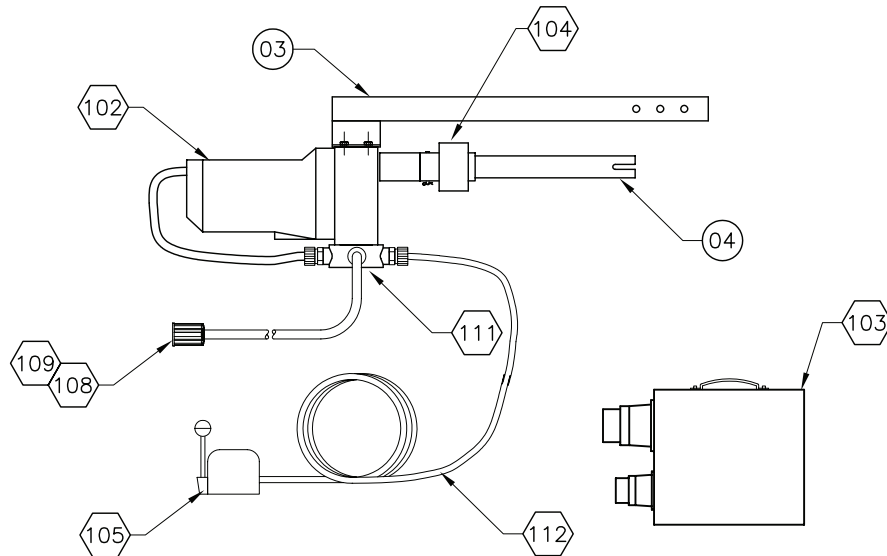
SHEET	TRANSITION ASSEMBLY	DWG. NO.	426-2-06
<b>06</b>		DATE:	09/26/05
		REV. DATE	

DWG. NO.	426-2-06
DATE:	09/26/05
REV. DATE	





**WINCH PLATE**



**PORTABLE DRIVE UNIT**

**ISSUED FOR APPROVAL**

APPROVED: \_\_\_\_\_

REVISE: \_\_\_\_\_

SIGNED COPY REQUIRED PRIOR TO MANUFACTURE

109		NOT USED
108	1	FEMALE CONNECTOR
107		NOT USED
106	1	MALE CONNECTOR
105	1	DRUM SWITCH
104	1	TORQUE TENDER
103	1	TRANSFORMER
102	1	DRIVE MOTOR
101	1	ROPE SPOOL
100	1	WINCH
06	1	SHAFT ADAPTER
05	1	BREAKER BOX ASSEMBLY
04	1	DRIVE SHAFT
03	1	DRIVE ARM ASSEMBLY
02	1	DRIVE RECIEVER HITCH
01	1	WINCH PLATE
ITM	QTY	DESCRIPTION

211	4	1/4 S.S. LOCK WASHER
210	4	1/4-20 X 3/4" S.S. HH BOLT
209	4	1/4" S.S. FLAT WASHER
208	4	1/4-20 S.S. LOCK NUT
207	4	1/4-20 X 1" S.S. HH BOLT
206	6	1/2-13 X 2" S.S. HH BOLT
205	9	1/2" S.S. FLAT WASHER
204	9	1/2-13 S.S LOCK NUT
203	3	1/2-13 X 4" S.S STUD
202	3	3/8 S.S. FLAT WASHER
201	3	3/8-16 S.S LOCK NUT
200	3	3/8-16 X 1 1/4 S.S. HH BOLT
112	1	25 FT CORD
111	1	JUNCTION BOX
110	1	MALE CONNECTOR

SHEET

**07**

WINCH PLATE ASSEMBLY

DWG. NO.

426-2-07

DATE:

09/26/05

REV. DATE



A Division of CHM Industries  
682-286-0046